

Word of the Day

Summer Term 2025

Week 35 – 2nd June 2025



This Week's Words

Grasshopper

tear
office
spare
chipped
lift

Shinobi

tolerate
mutter
fixation
unveil

VN VOCABULARY

VN Grasshopper Word of the Day

Word of the Day: picnic
(pic-nic)

Word Class: (verb / noun)

Definition: If you tear paper, cloth, or another material, or if it tears, you pull it into two pieces or you pull it so that a hole appears in it.

Phrases:

Synonym: word
word

Antonym: word
word

Rhyme: word
word

Link Word: word
word

The was a hole in Freddie's new school picnic.

Phrase Number One

Phrase Number Two

VN Shinobi Word of the Day

Word of the Day: tear
(tear)

Word Class: (verb / noun)

Definition: If you tear paper, cloth, or another material, or if it tears, you pull it into two pieces or you pull it so that a hole appears in it.

Phrases:

Synonym: word
word

Antonym: word
word

Prefix / Suffix: word
word

Link Word: word
word

The was a tear in Freddie's new school book.

Phrase Number One

Phrase Number Two

'Words unlock the doors to a world of understanding...'

This Week's Words

Grasshopper

shrug

slither

slurp

sour

snuggle

Shinobi

snub

sombre

squint

scramble

strewn



VOCABULARY NINJA

Grasshopper (Tier 1)

shrug

slither

slurp

sour

snuggle



VOCABULARY NINJA

Shinobi (Tier 2)

snub

sombre

squint

scramble

strewn



VOCABULARY NINJA



Grasshopper Word of the Day

Word of the Day:

Pronunciation / Syllables

shrug
(shrug)

Word Class
(verb / noun)

Definition:

If you shrug something off, you ignore it or treat it as if it is not really important or serious.



Jay gave a quick **shrug** when he didn't know the answer.

Synonym:

wiggle

jolt

Antonym:

still

Prefix / Suffix:

-s

-ed

Rhyme:

dug

rug

Link Word:

casual

quick



Grasshopper Word of the Day

Word of the Day:

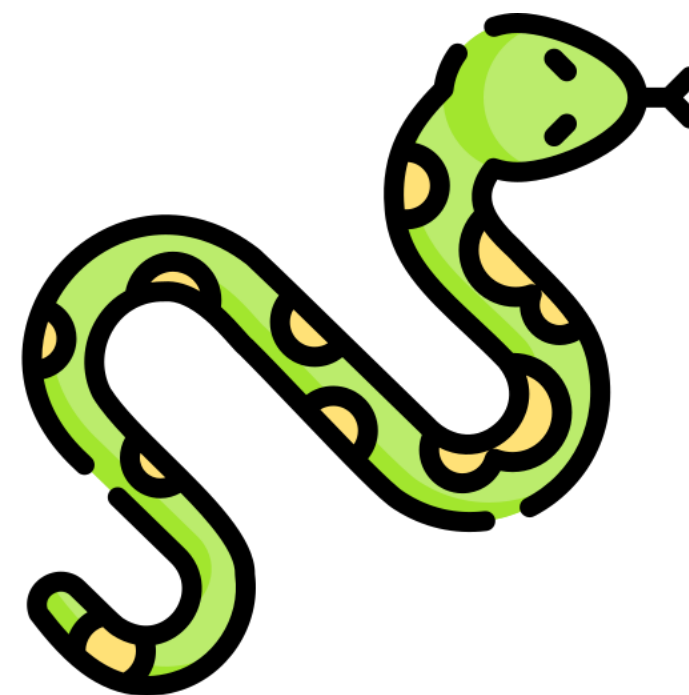
Pronunciation / Syllables

slither
(*slith-er*)

Word Class
(verb)

Definition:

If you slither somewhere, you slide along in an uneven way.



The toy snake **slithered** across the desk during science.

Synonym:

slink

crawl

Antonym:

Prefix / Suffix:

-ed

-ing

Rhyme:

wither

dither

Link Word:

slowly

silently



Grasshopper Word of the Day

Word of the Day:

Pronunciation / Syllables

slurp
(slurp)

Word Class
(verb)

Definition:

If you slurp a liquid, you drink it noisily.



Amy **slurped** while drinking her juice.

Synonym:

guzzle

suck

Antonym:

Prefix / Suffix:

-ing

-ed

Rhyme:

chirp

burp

Link Word:

loud

big



Grasshopper Word of the Day

Word of the Day:

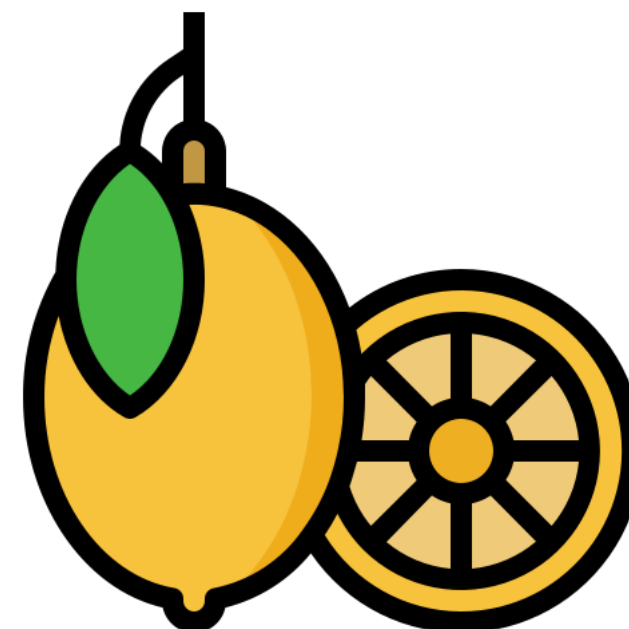
Pronunciation / Syllables

sour
(*sour*)

Word Class
(adjective)

Definition:

Something that is sour has a sharp, unpleasant taste like the taste of a lemon.



The lemon in the science experiment tasted **sour**.

Synonym:

bitter
sharp

Antonym:

bland
sweet

Prefix / Suffix:

un-
-ing

Rhyme:

power
hour

Link Word:

slightly
turn



Grasshopper Word of the Day

Word of the Day:

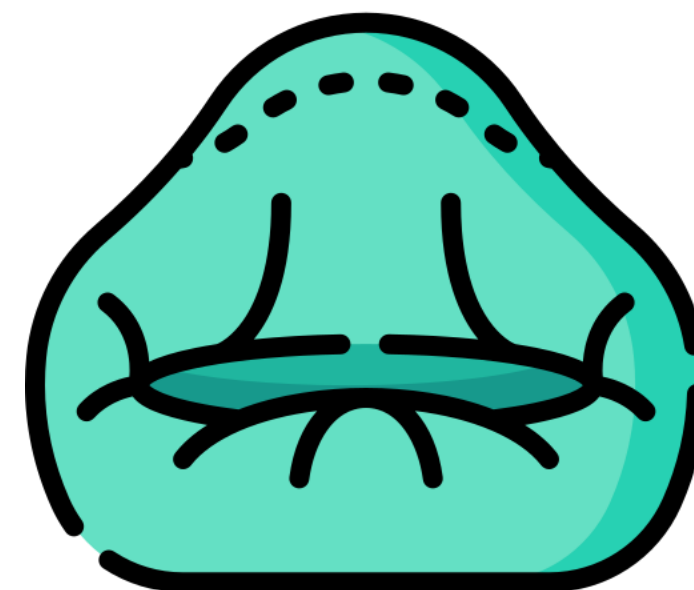
Pronunciation / Syllables

snuggle
(*snug-gle*)

Word Class
(verb)

Definition:

If you snuggle somewhere, you settle yourself into a warm, comfortable position, especially by moving closer to another person.



Ishika **snuggled** into the beanbag chair while reading.

Synonym:

huddle

hug

Antonym:

separate

release

Prefix / Suffix:

-ed

-ing

Rhyme:

smuggle

juggle

Link Word:

cozy

gently



Shinobi Word of the Day

Word of the Day:

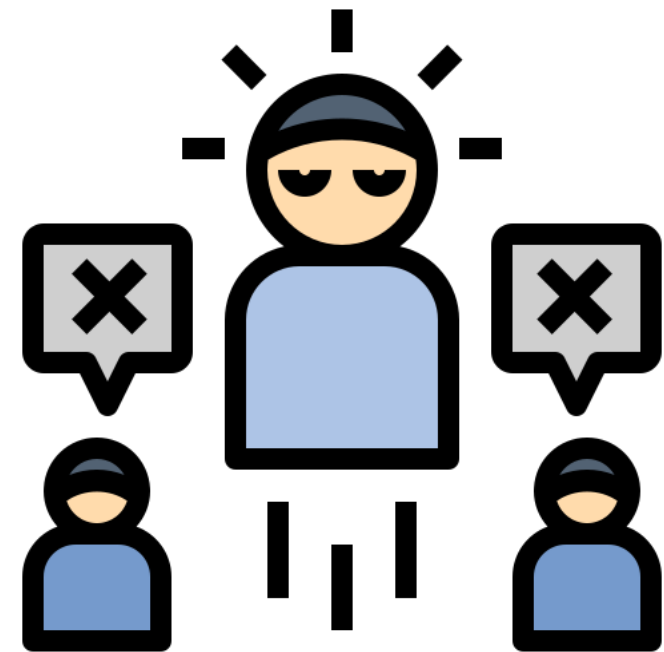
Pronunciation / Syllables

snub
(*snub*)

Word Class
(verb / noun)

Definition:

If you snub someone, you deliberately insult them by ignoring them or by behaving or speaking rudely towards them.



Katy felt sad when the group **snubbed** her idea.

Synonym:

boycott

neglect

Antonym:

praise

regard

Prefix / Suffix

-ing

-ed

Rhyme:

club

rub

Link Word:

deliberate

openly



Shinobi Word of the Day

Word of the Day:

Pronunciation / Syllables

sombre
(som-bre)

Word Class
(adjective)

Definition:

If someone is sombre, they
are serious or sad.



The class felt **sombre** before the test.

Synonym:

gloomy

dismal

Antonym:

happy

hopeful

Prefix / Suffix:

-ing

Rhyme:

Link Word:

feel

visibly



Shinobi Word of the Day

Word of the Day:

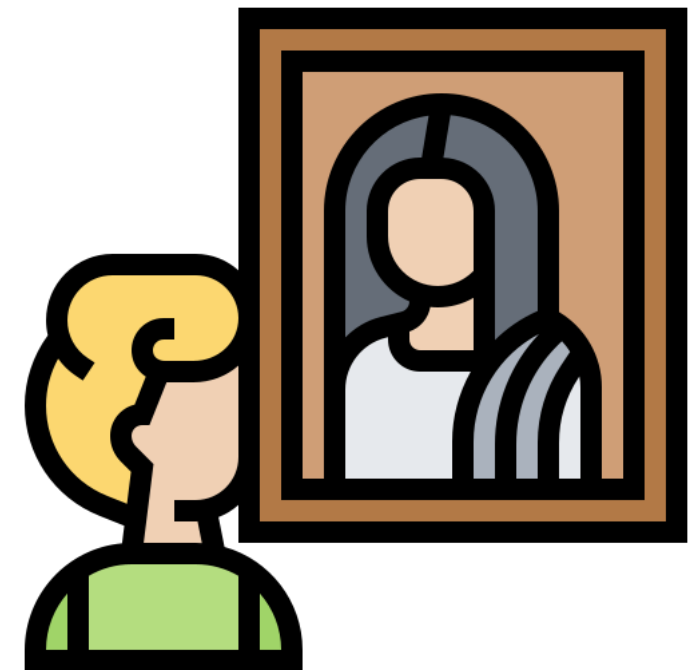
Pronunciation / Syllables

squint
(*squint*)

Word Class
(verb)

Definition:

If you squint at something, you look at it with your eyes partly closed.



Jai had to **squint** to see the painting.

Synonym:

peek

peep

Antonym:

open

Prefix / Suffix:

-ing

Rhyme:

print

hint

Link Word:

slight

brief



Shinobi Word of the Day

Word of the Day:

scramble
(scram-ble)

Word Class
(verb)

Pronunciation / Syllables

Definition:

If you scramble to a different place or position, you move there in a hurried, awkward way.



The class had to **scramble** to finish their projects.

Synonym:

clamber
scurry

Antonym:

retreat
rest

Prefix / Suffix:

-ed
-ing

Rhyme:

gamble
ramble

Link Word:

wild
blindly



Shinobi Word of the Day

Word of the Day:

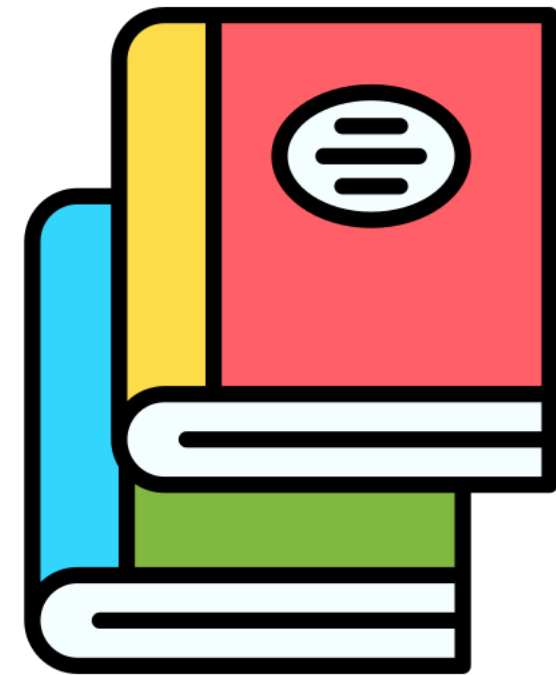
Pronunciation / Syllables

strewn
(*strewn*)

Word Class
(adjective)

Definition:

If a place is strewn with things,
they are lying scattered there.



The books were **strewn** across the classroom.

Synonym:

messy
piled

Antonym:

organised

Prefix / Suffix:

Rhyme:

soon
moon

Link Word:

lay
randomly

Vocabulary Laboratory



Describe / Definition:

Use it in a sentence:

Focus Word (write below):

Word Class:

Synonyms:

(words with same / similar meaning)

Antonyms:

(words with opposite meaning)

Draw your sentence:

Rhymes:

(words that sound the same)

Link Words:

(Example: football = pitch, team, player)

Vocabulary Visualiser

Draw the
Grasshopper words
and bring them to life.



Word: shrug

Word: sour

Word: slurp

Word: snuggle



Vocabulary Visualiser

Draw the **Shinobi**
words and bring
them to life.



Word: snub

Word: scramble

Word: squint

Word: strewn



Matching Meanings

Draw lines from the **Grasshopper** words to their definitions.



Grasshopper Word

Grasshopper Definitions

shrug

If you *** a liquid, you drink it noisily.



slither

Something that is *** has a sharp, unpleasant taste like the taste of a lemon.



slurp

If you *** something off, you ignore it or treat it as if it is not really important or serious.



sour

If you *** somewhere, you settle yourself into a warm, comfortable position, especially by moving closer to another person.



snuggle

If you *** somewhere, you slide along in an uneven way.



Matching Meanings

Draw lines from the **Shinobi** words to their definitions.

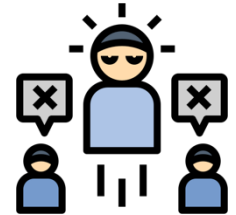


Shinobi Word

Shinobi Definitions

snub

If you *** someone, you deliberately insult them by ignoring them or by behaving or speaking rudely towards them.



sombre

If you *** to a different place or position, you move there in a hurried, awkward way.



squint

If a place is *** with things, they are lying scattered there.



scramble

If someone is ***, they are serious or sad.



strewn

If you *** at something, you look at it with your eyes partly closed.





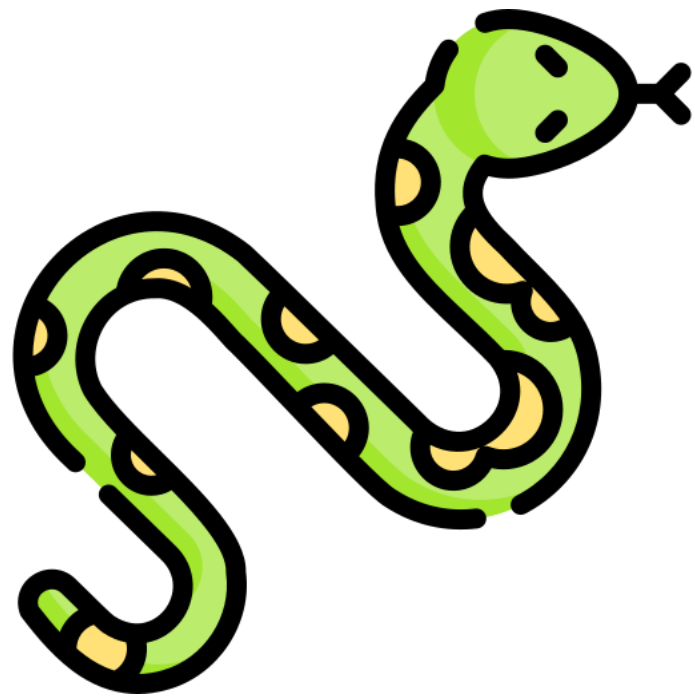
Display Slips

The following slides are for classroom display. As you teach each Word of the Day, words can be displayed in the classroom to enable pupils to use the taught vocabulary in an independent manner.





shrug

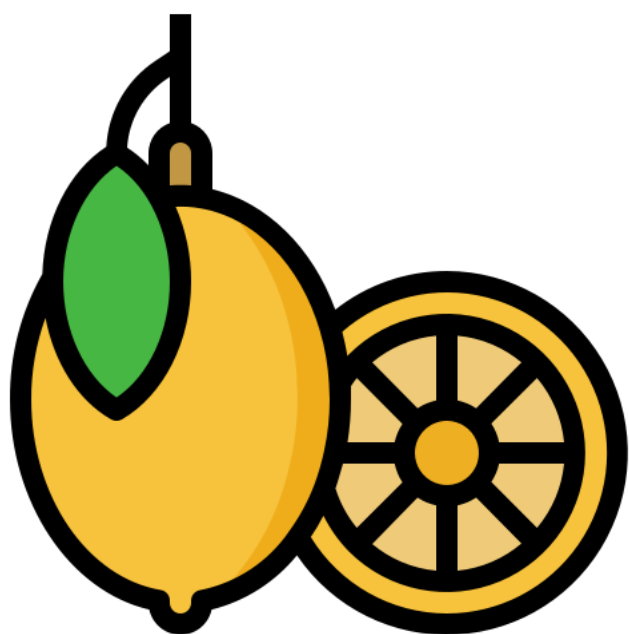


slither





slurp

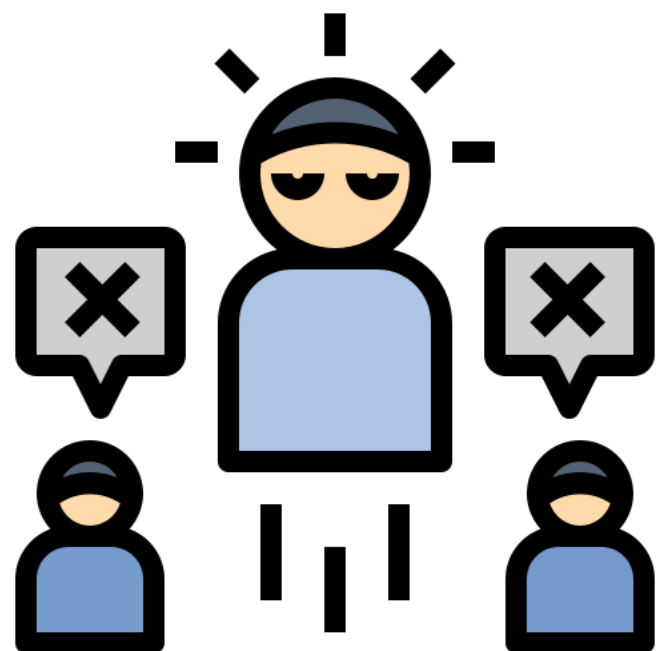
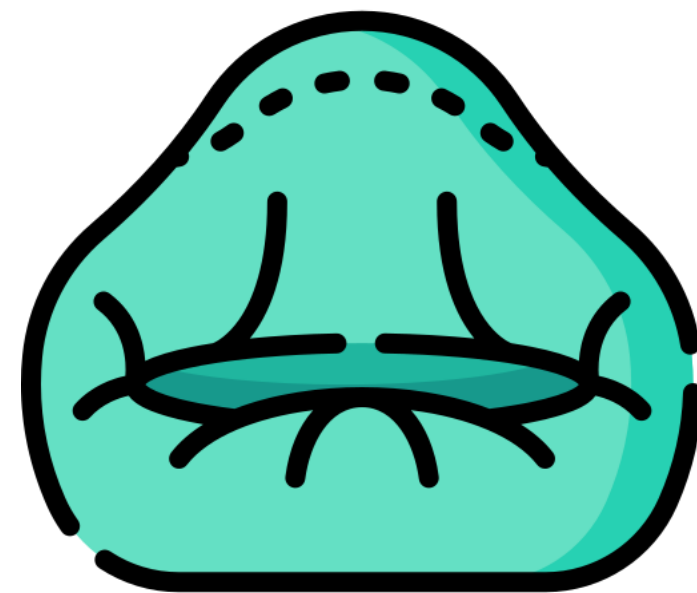


sour





snuggle

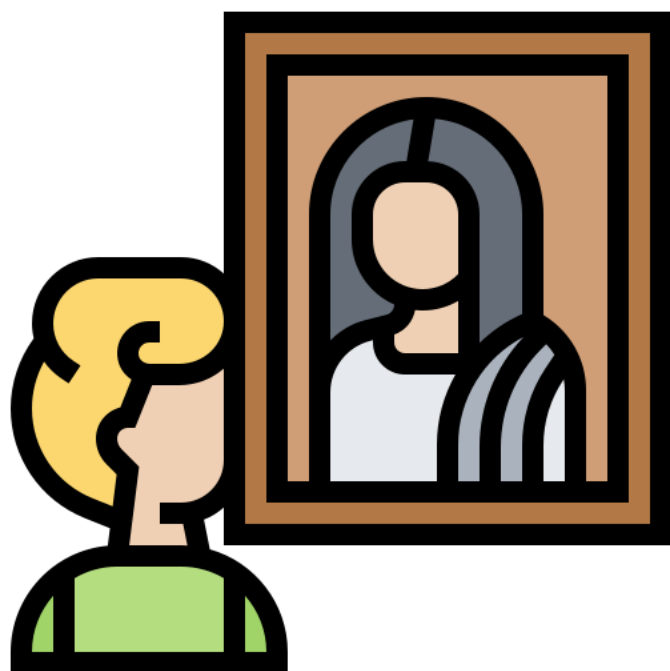


snub





sombre

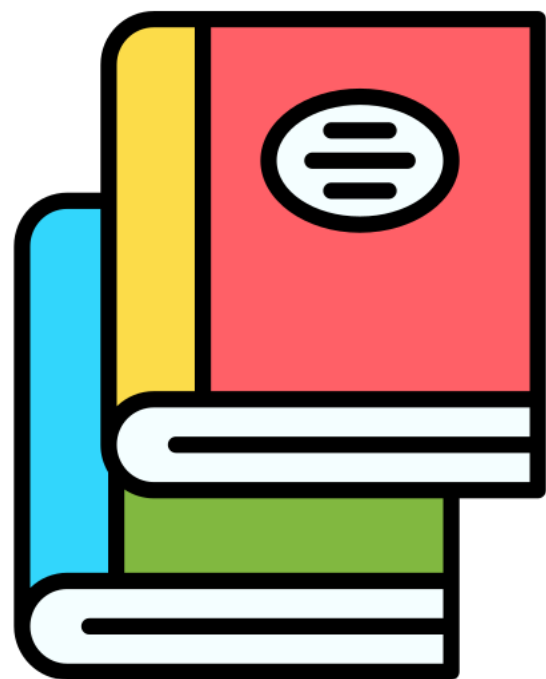


squint





scramble



strewn





Font Variation

The following display slips contain the same words, but have a more regular font, which have a more regular formation of 'a' and 'g'. Futura is the name of the font.




worried



opini

asure

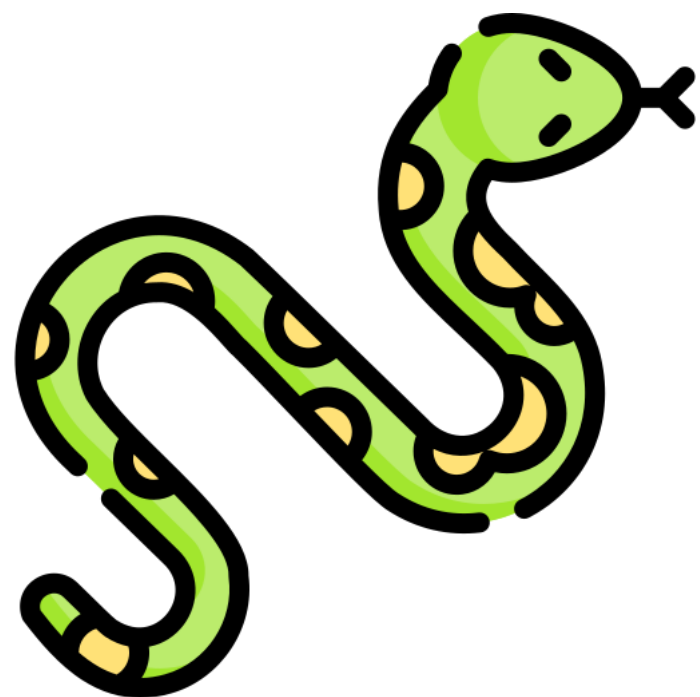
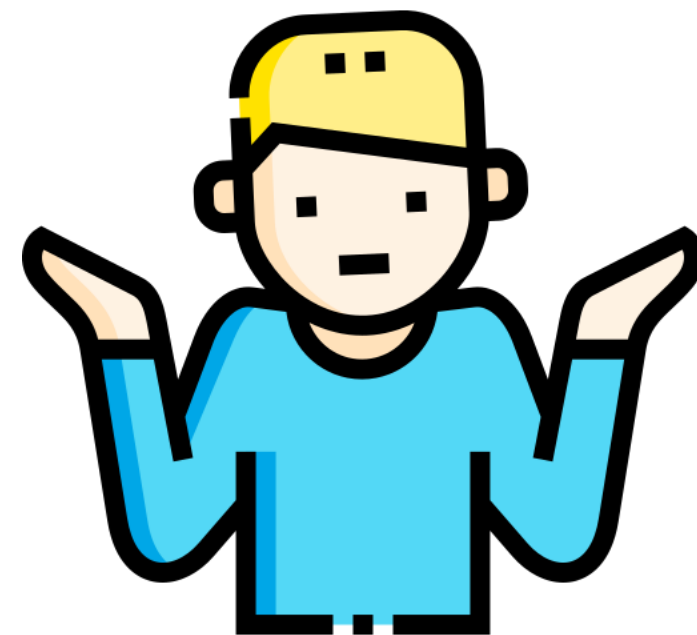


dia





shrug

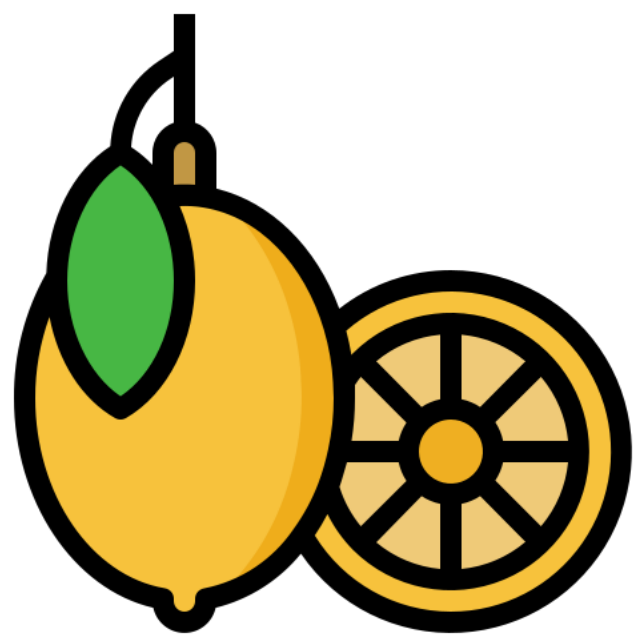


slither





slurp

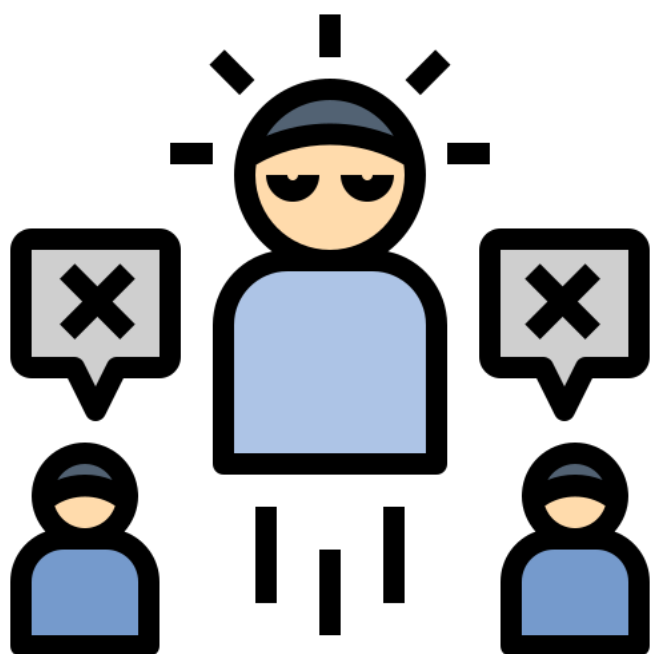
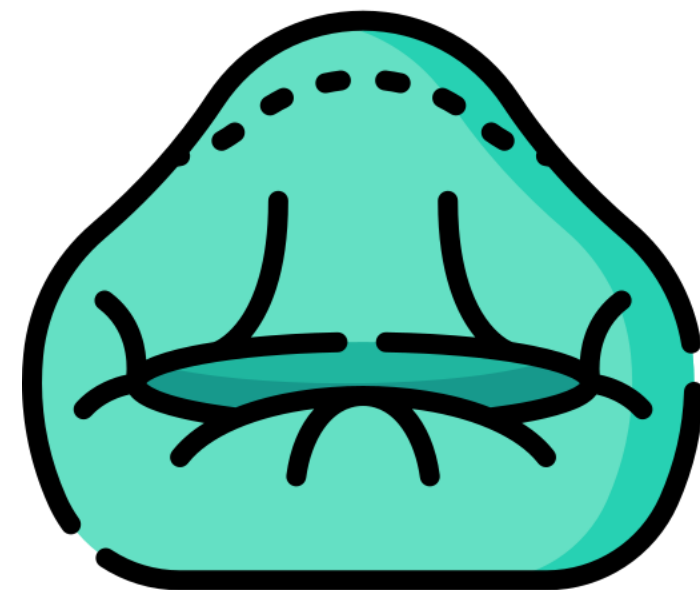


sour





snuggle

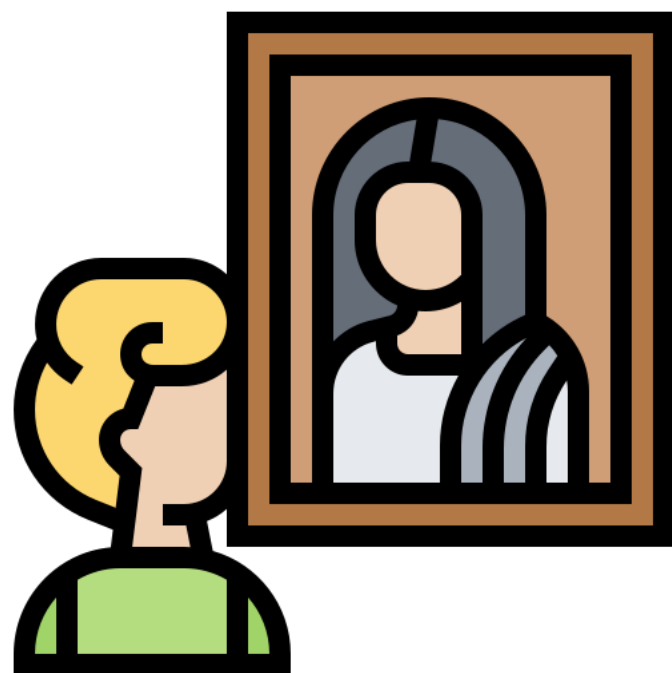


snub





sombre

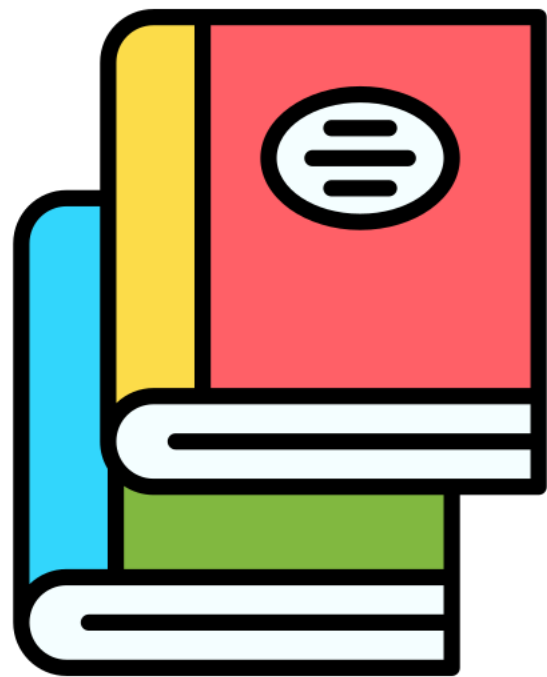


squint





scramble



strewn

